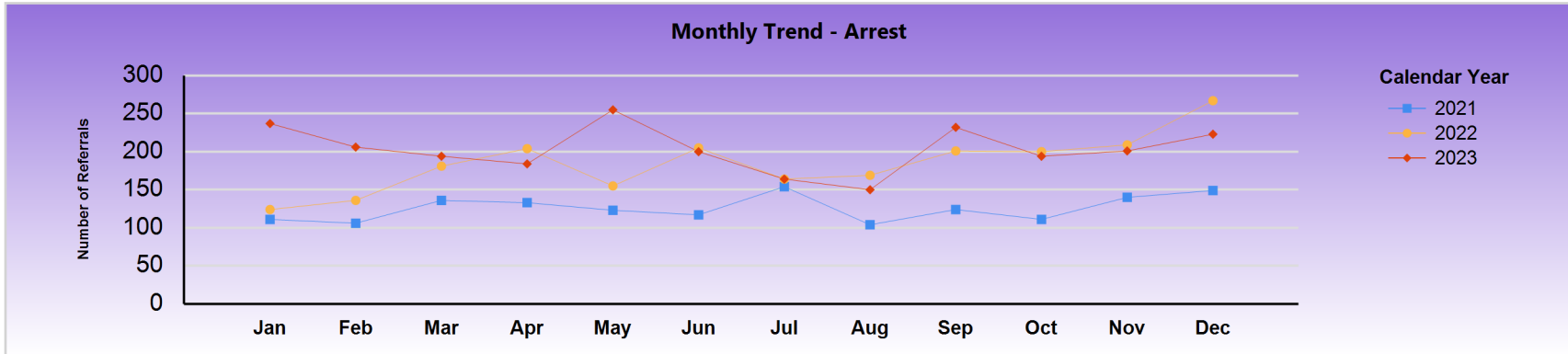




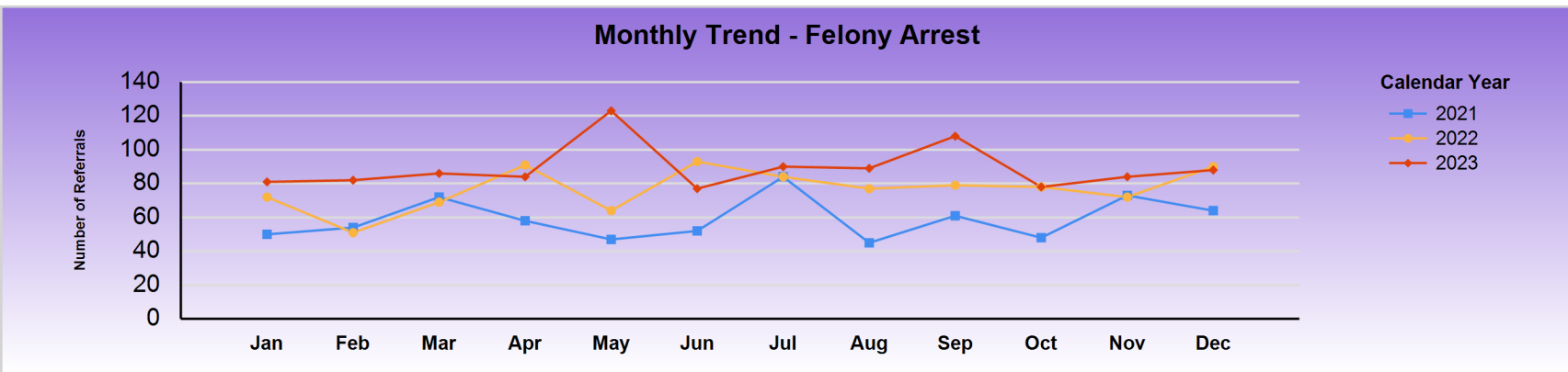
# County of Santa Clara

Report Calendar Year: 2023

Report Month: December



Referral Count	Jan	Feb	Mar	Apr	May	Jun	Jul	Aug	Sep	Oct	Nov	Dec	Total
2021	111	106	136	133	123	117	154	104	124	111	140	149	1508
2022	124	136	181	204	155	205	164	169	201	200	209	267	2215
2023	237	206	194	184	255	200	164	150	232	194	201	223	2440



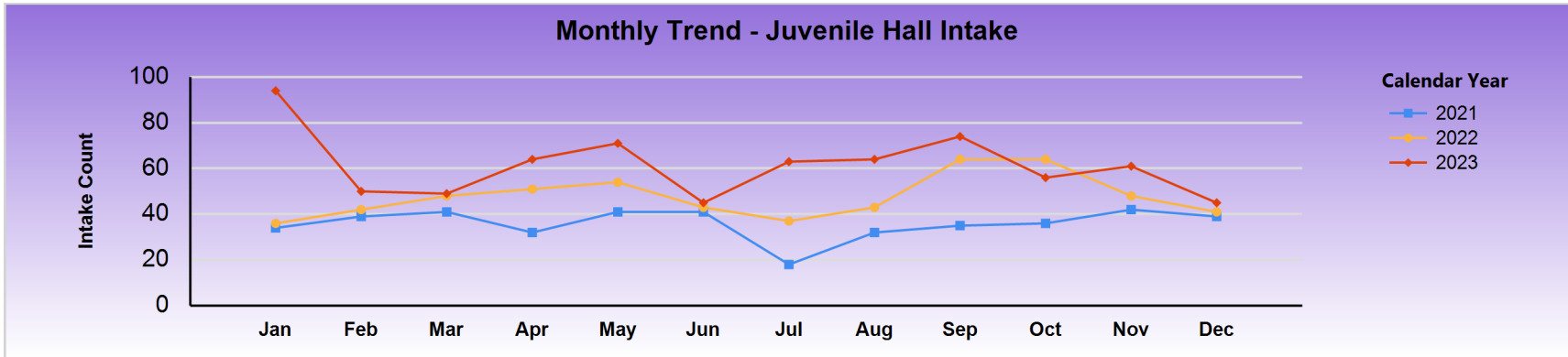
Felony Referral Count	Jan	Feb	Mar	Apr	May	Jun	Jul	Aug	Sep	Oct	Nov	Dec	Total
2021	50	54	72	58	47	52	84	45	61	48	73	64	708
2022	72	51	69	91	64	93	84	77	79	78	72	90	920
2023	81	82	86	84	123	77	90	89	108	78	84	88	1070



# County of Santa Clara

Report Calendar Year: 2023

Report Month: December



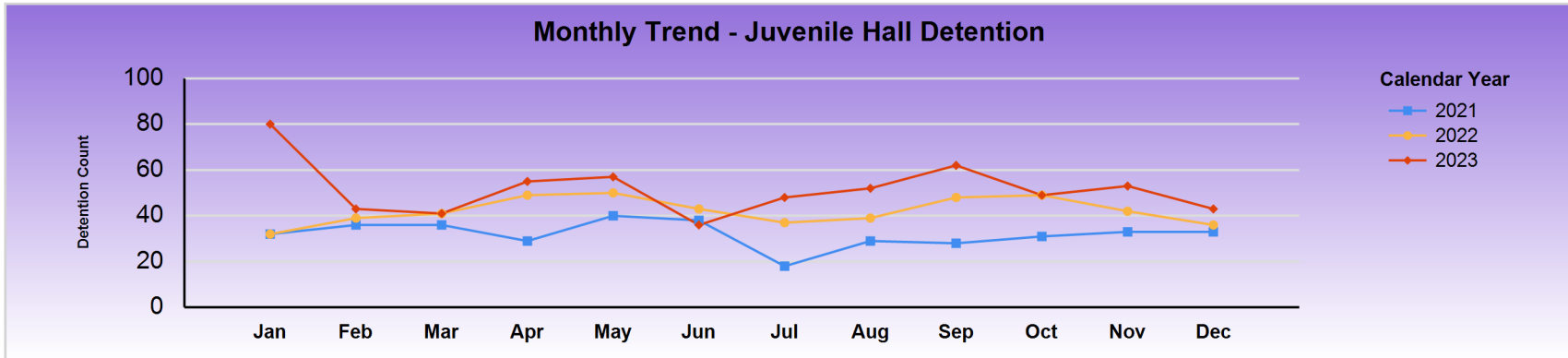
Intake	Jan	Feb	Mar	Apr	May	Jun	Jul	Aug	Sep	Oct	Nov	Dec	Total
2021	34	39	41	32	41	41	18	32	35	36	42	39	430
2022	36	42	48	51	54	43	37	43	64	64	48	41	571
2023	94	50	49	64	71	45	63	64	74	56	61	45	736



# County of Santa Clara

Report Calendar Year: 2023

Report Month: December



	Count	Jan	Feb	Mar	Apr	May	Jun	Jul	Aug	Sep	Oct	Nov	Dec	Total
2021	Detained	32	36	36	29	40	38	18	29	28	31	33	33	383
	Released	2	3	5	3	1	3		3	7	5	9	6	47
	RAI Count	34	39	41	32	41	41	18	32	35	36	42	39	430
	Detained %	94%	92%	88%	91%	98%	93%	100%	91%	80%	86%	79%	85%	89%
2022	Detained	32	39	41	49	50	43	37	39	48	49	42	36	505
	Released	4	3	7	2	4			4	16	15	6	5	66
	RAI Count	36	42	48	51	54	43	37	43	64	64	48	41	571
	Detained %	89%	93%	85%	96%	93%	100%	100%	91%	75%	77%	88%	88%	88%
2023	Detained	80	43	41	55	57	36	48	52	62	49	53	43	619
	Released	14	7	8	9	14	9	15	12	12	7	8	2	117
	RAI Count	94	50	49	64	71	45	63	64	74	56	61	45	736
	Detained %	85%	86%	84%	86%	80%	80%	76%	81%	84%	88%	87%	96%	84%

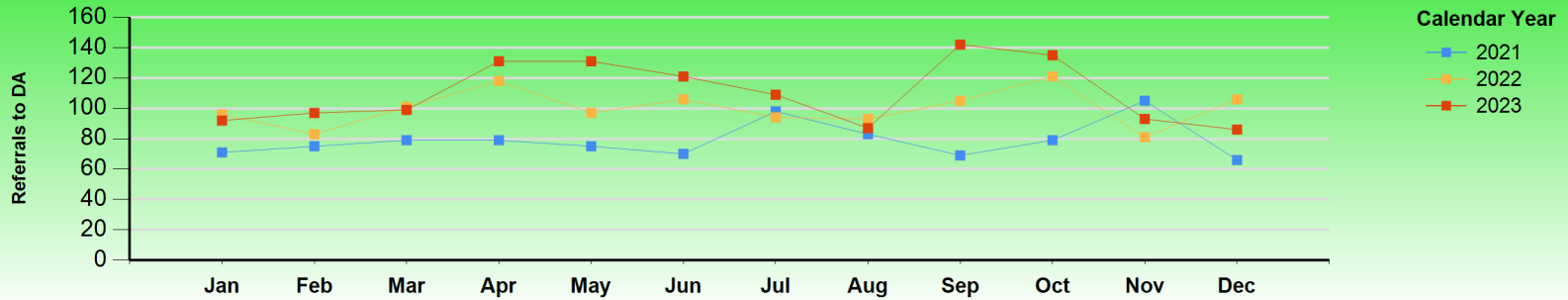


# County of Santa Clara

Report Calendar Year: 2023

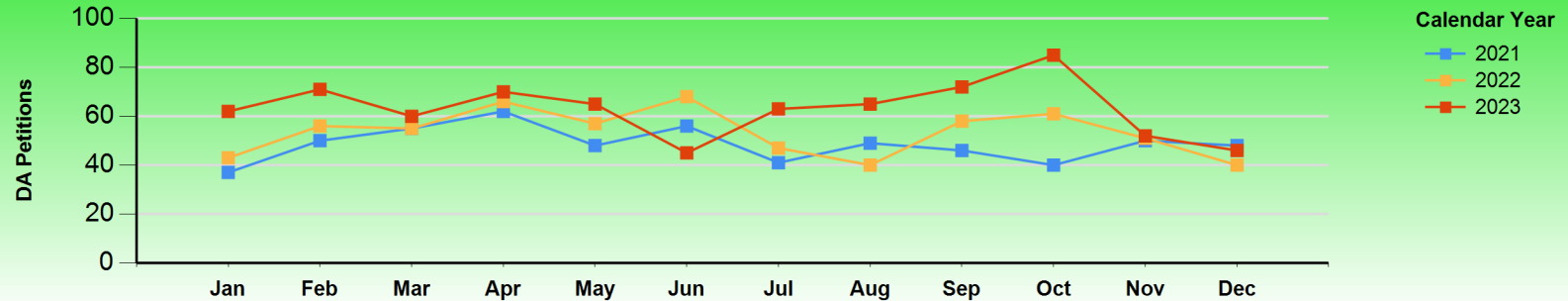
Report Month: December

### Monthly Trend - Referral to DA



Referral to DA	Jan	Feb	Mar	Apr	May	Jun	Jul	Aug	Sep	Oct	Nov	Dec	Total
2021	71	75	79	79	75	70	98	83	69	79	105	66	949
2022	96	83	101	118	97	106	94	93	105	121	81	106	1201
2023	92	97	99	131	131	121	109	87	142	135	93	86	1323

### Monthly Trend - Petition Filed by DA



Petition Filed by DA	Jan	Feb	Mar	Apr	May	Jun	Jul	Aug	Sep	Oct	Nov	Dec	Total
2021	37	50	55	62	48	56	41	49	46	40	50	48	582
2022	43	56	55	66	57	68	47	40	58	61	51	40	642
2023	62	71	60	70	65	45	63	65	72	85	52	46	756

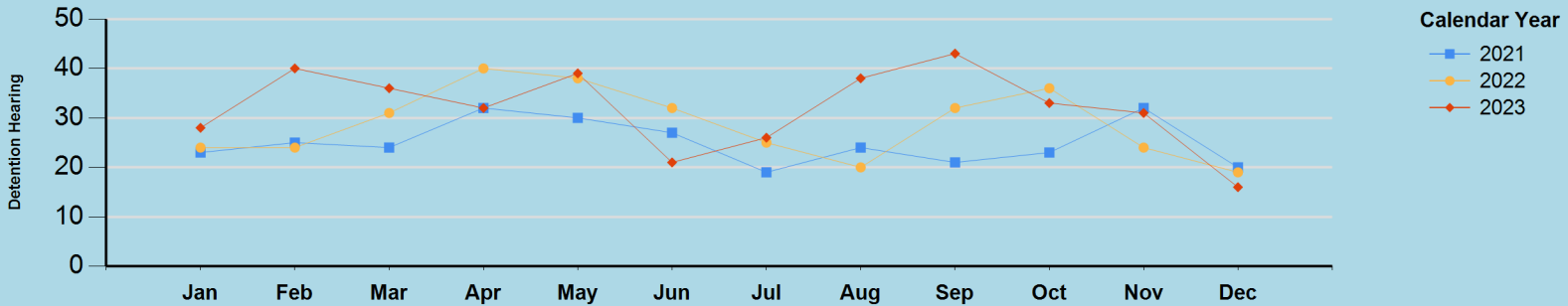


# County of Santa Clara

Report Calendar Year: 2023

Report Month: December

### Monthly Trend - Detention Hearing



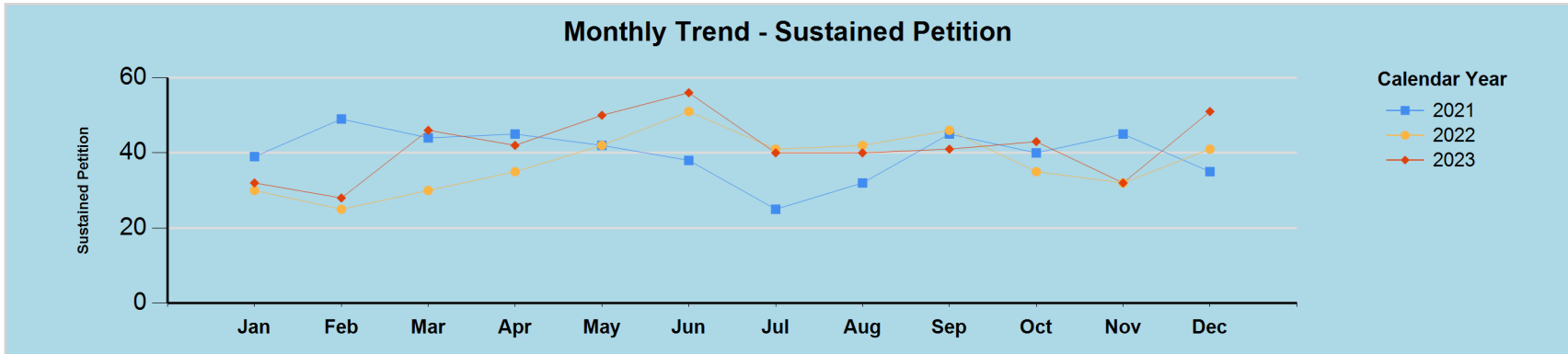
	Detention Count	Jan	Feb	Mar	Apr	May	Jun	Jul	Aug	Sep	Oct	Nov	Dec	Total
2021	Detained	23	25	24	32	30	27	19	24	21	23	32	20	300
	Released	5	7	5	3	12	7	7	10	9	9	20	7	101
	Total	28	32	29	35	42	34	26	34	30	32	52	27	401
	Detained %	82%	78%	83%	91%	71%	79%	73%	71%	70%	72%	62%	74%	75%
2022	Detained	24	24	31	40	38	32	25	20	32	36	24	19	345
	Released	7	8	7	7	7	9	10	5	10	6	11	6	93
	Total	31	32	38	47	45	41	35	25	42	42	35	25	438
	Detained %	77%	75%	82%	85%	84%	78%	71%	80%	76%	86%	69%	76%	79%
2023	Detained	28	40	36	32	39	21	26	38	43	33	31	16	383
	Released	9	16	16	17	10	11	12	11	21	11	17	12	163
	Total	37	56	52	49	49	32	38	49	64	44	48	28	546
	Detained %	76%	71%	69%	65%	80%	66%	68%	78%	67%	75%	65%	57%	70%



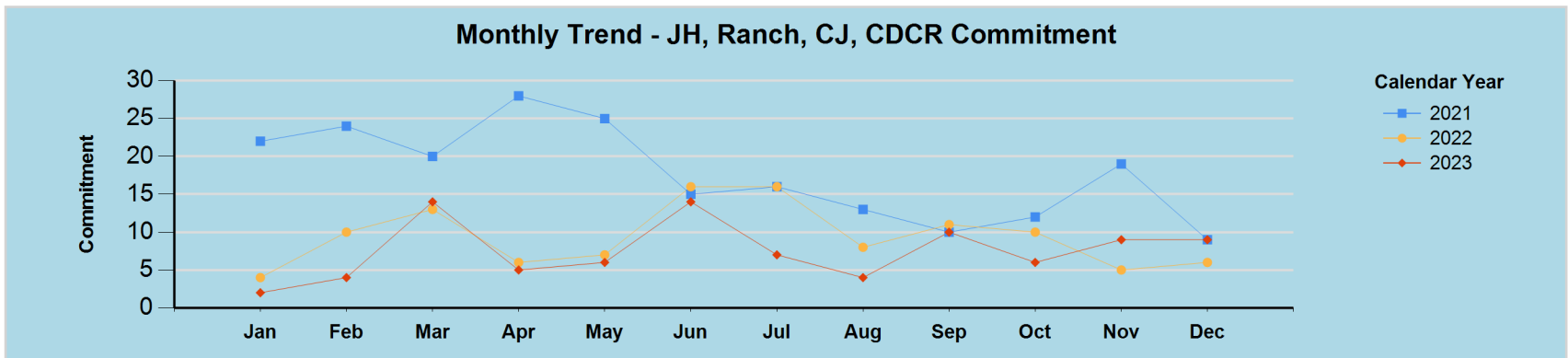
# County of Santa Clara

Report Calendar Year: 2023

Report Month: December



Sustained Petition	Jan	Feb	Mar	Apr	May	Jun	Jul	Aug	Sep	Oct	Nov	Dec	Total
2021	39	49	44	45	42	38	25	32	45	40	45	35	479
2022	30	25	30	35	42	51	41	42	46	35	32	41	450
2023	32	28	46	42	50	56	40	40	41	43	32	51	501



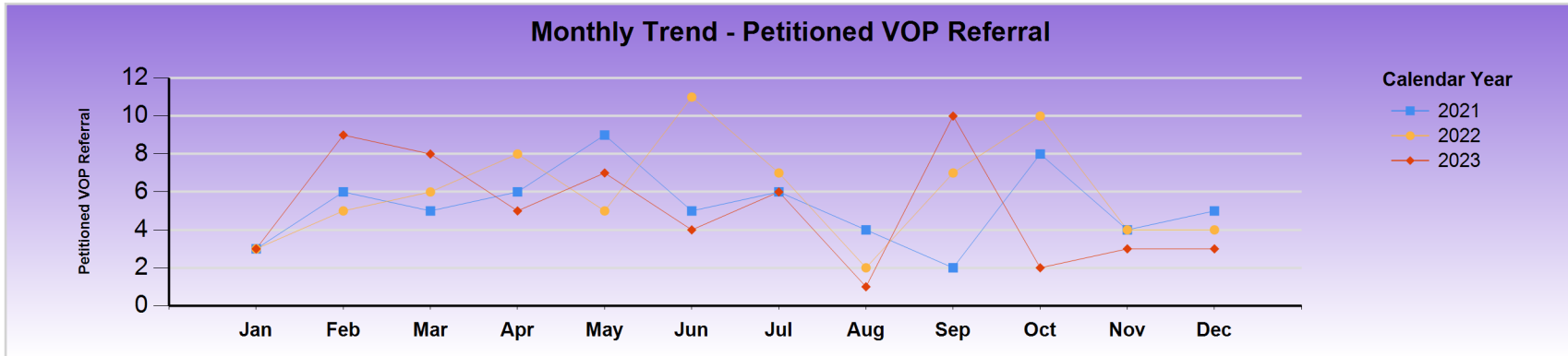
JH, Ranch, CJ, CDCR Commitment	Jan	Feb	Mar	Apr	May	Jun	Jul	Aug	Sep	Oct	Nov	Dec	Total
2021	22	24	20	28	25	15	16	13	10	12	19	9	213
2022	4	10	13	6	7	16	16	8	11	10	5	6	112
2023	2	4	14	5	6	14	7	4	10	6	9	9	90



# County of Santa Clara

Report Calendar Year: 2023

Report Month: December



Petitioned VOP Referral	Jan	Feb	Mar	Apr	May	Jun	Jul	Aug	Sep	Oct	Nov	Dec	Total
<b>2021</b>	3	6	5	6	9	5	6	4	2	8	4	5	<b>63</b>
<b>2022</b>	3	5	6	8	5	11	7	2	7	10	4	4	<b>72</b>
<b>2023</b>	3	9	8	5	7	4	6	1	10	2	3	3	<b>61</b>



## County of Santa Clara

Report Calendar Year: 2023

Report Month: December

# KEY ARREST DEMOGRAPHICS



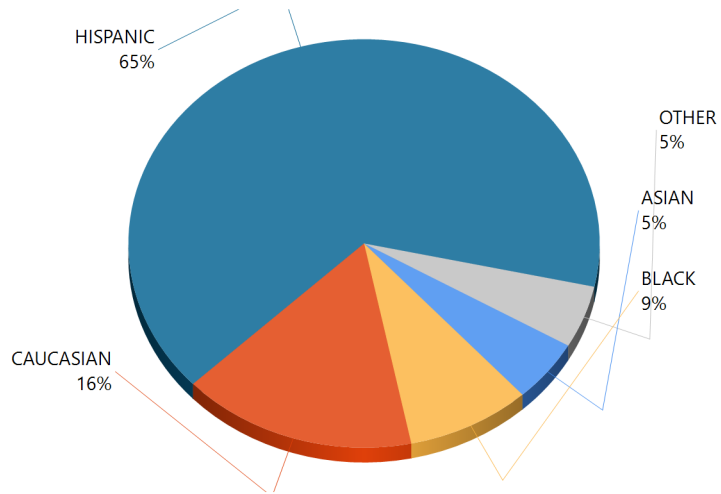


# County of Santa Clara

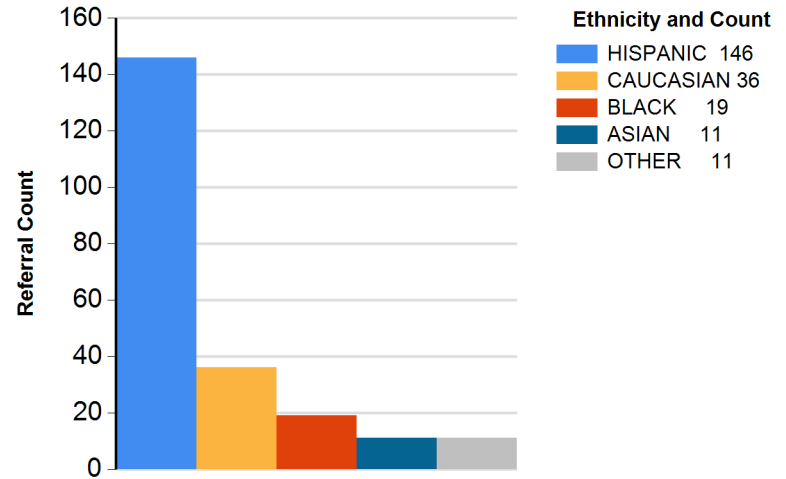
Report Calendar Year: 2023

Report Month: December

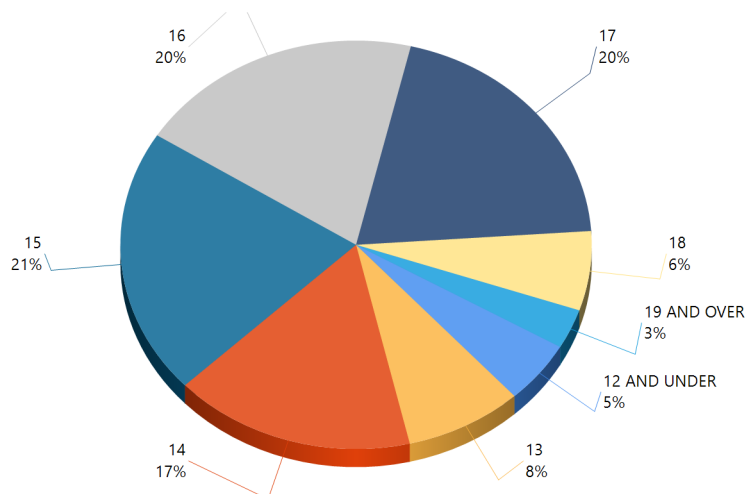
### By Ethnicity (%)



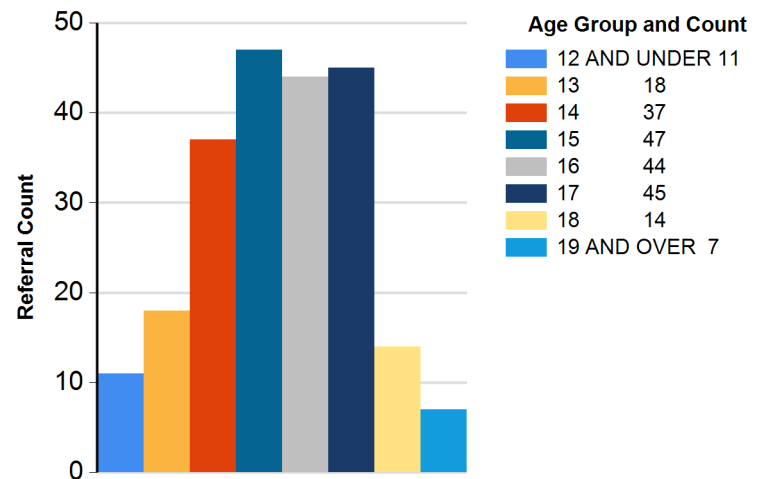
### By Ethnicity (Count)



### By Age (%)



### By Age (Count)



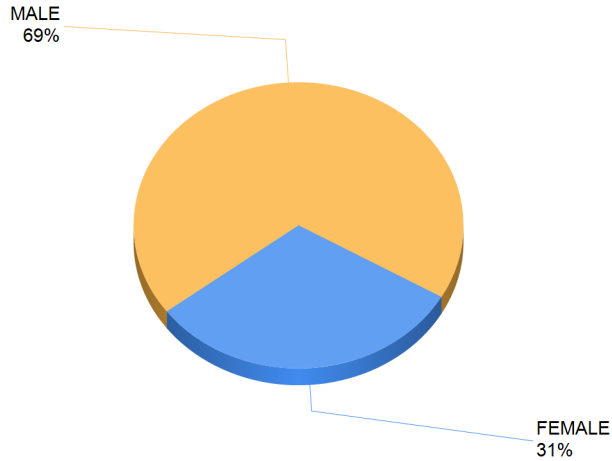


# County of Santa Clara

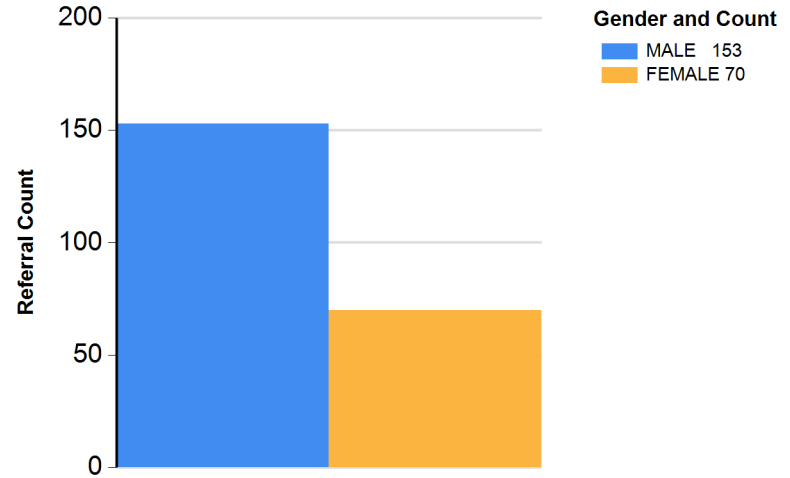
Report Calendar Year: 2023

Report Month: December

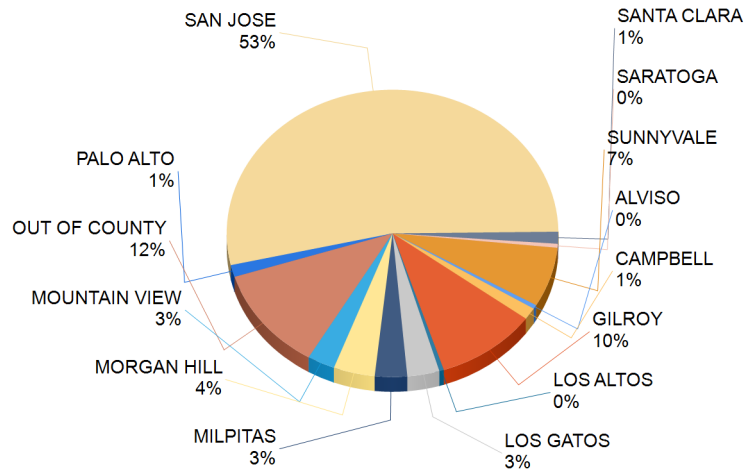
### By Gender (%)



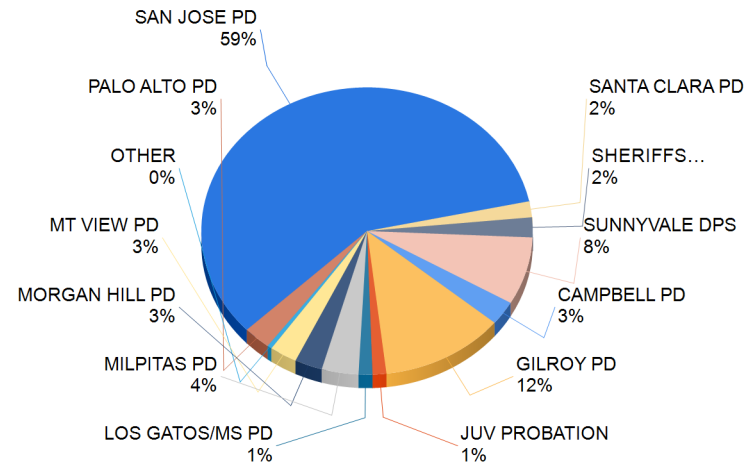
### By Gender (Count)



### By Youth Residence City (%)



### By Referral Agency (%)



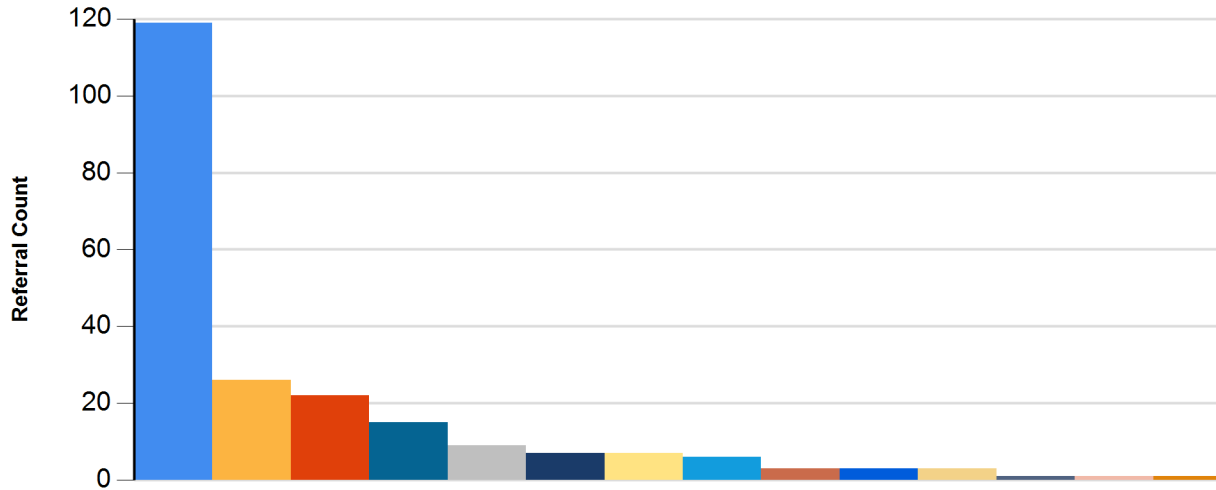


# County of Santa Clara

Report Calendar Year: 2023

Report Month: December

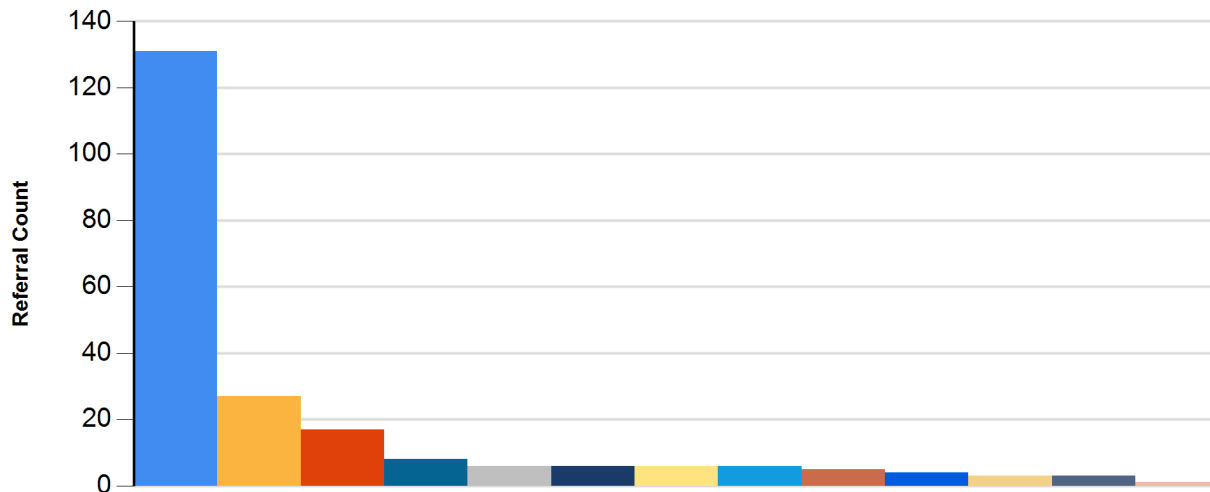
## By Youth Residence City (Count)



**City and Count**

SAN JOSE	119
OUT OF COUNTY	26
GILROY	22
SUNNYVALE	15
MORGAN HILL	9
LOS GATOS	7
MILPITAS	7
MOUNTAIN VIEW	6
CAMPBELL	3
PALO ALTO	3
SANTA CLARA	3
ALVISO	1
LOS ALTOS	1
SARATOGA	1

## By Referral Agency (Count)



**Agency Group and Count**

SAN JOSE PD	131
GILROY PD	27
SUNNYVALE DPS	17
MILPITAS PD	8
CAMPBELL PD	6
MORGAN HILL PD	6
PALO ALTO PD	6
MT VIEW PD	6
SHERIFFS OFFICE	5
SANTA CLARA PD	4
JUV PROBATION	3
LOS GATOS/MS PD	3
OTHER	1

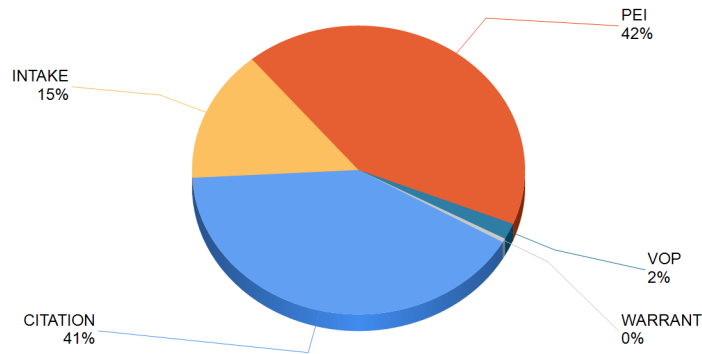


# County of Santa Clara

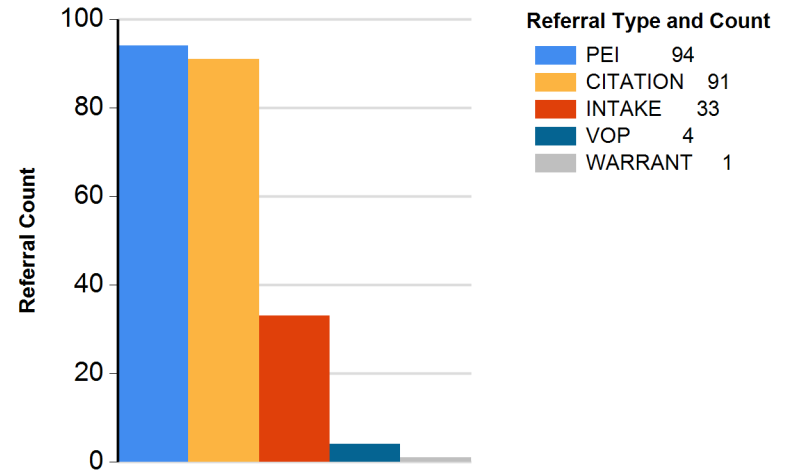
Report Calendar Year: 2023

Report Month: December

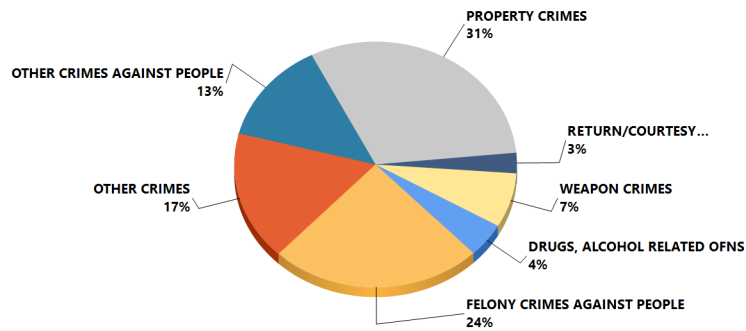
### By Referral Type (%)



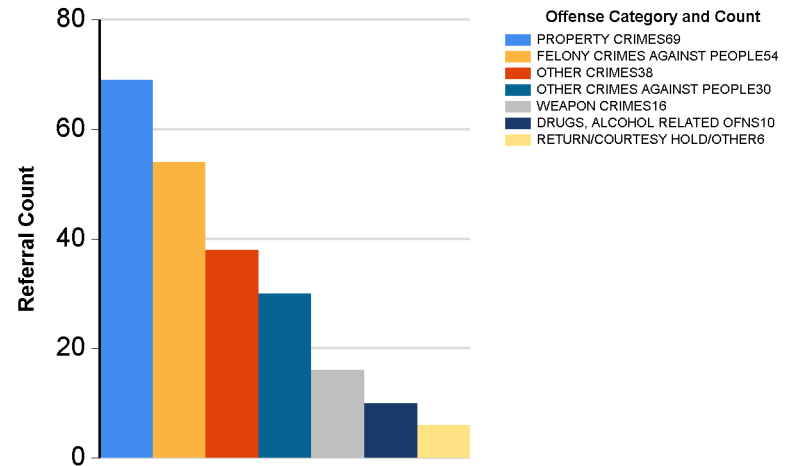
### By Referral Type (Count)



### By Major Offense Category (%)



### By Major Offense Category (Count)



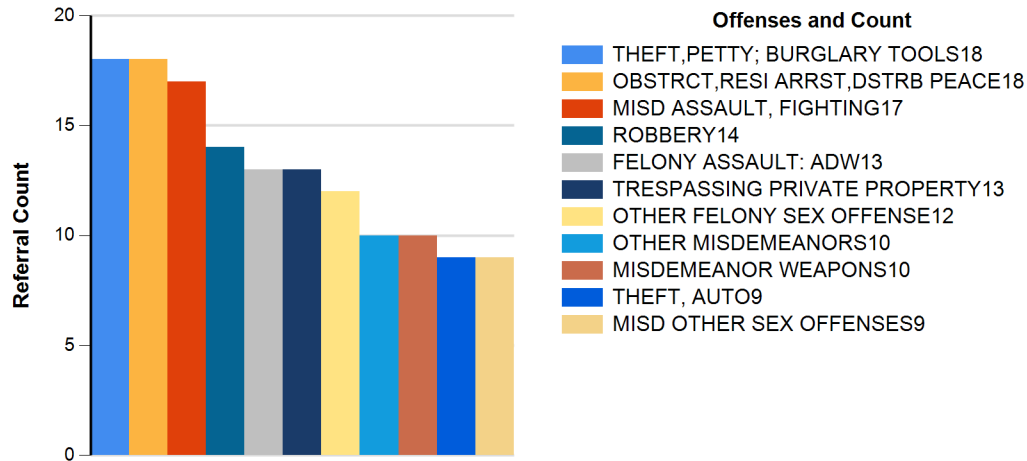


# County of Santa Clara

Report Calendar Year: 2023

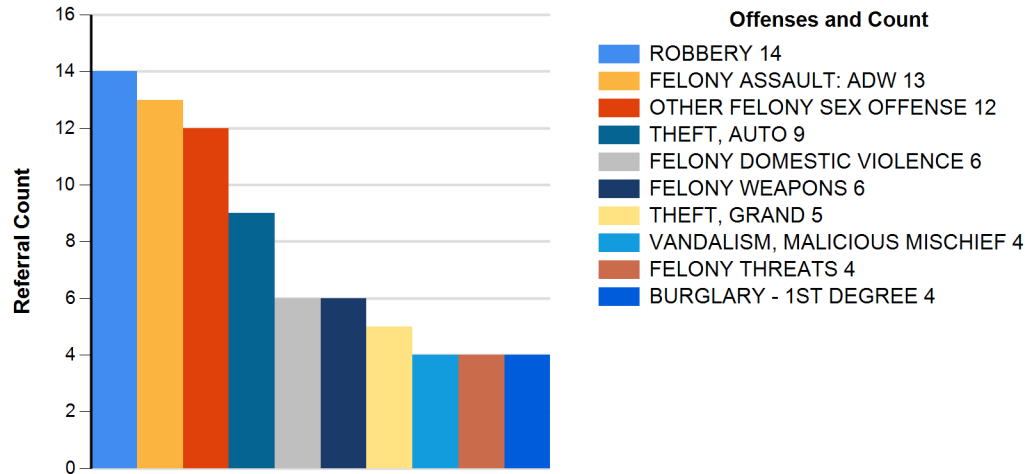
Report Month: December

## Top 10 Overall Offenses by Subcategory



Rank	Subcategory	Referral Count
1	THEFT,PETTY; BURGLARY TOOLS	18
1	OBSTRCT,RESI ARRST,DSTRB PEACE	18
3	MISD ASSAULT, FIGHTING	17
4	ROBBERY	14
5	FELONY ASSAULT: ADW	13
5	TRESPASSING PRIVATE PROPERTY	13
7	OTHER FELONY SEX OFFENSE	12
8	OTHER MISDEMEANORS	10
8	MISDEMEANOR WEAPONS	10
10	THEFT, AUTO	9
10	MISD OTHER SEX OFFENSES	9

## Top 10 Felony Offenses by Subcategory



Rank	Subcategory	Referral Count
1	ROBBERY	14
2	FELONY ASSAULT: ADW	13
3	OTHER FELONY SEX OFFENSE	12
4	THEFT, AUTO	9
5	FELONY DOMESTIC VIOLENCE	6
5	FELONY WEAPONS	6
7	THEFT, GRAND	5
8	VANDALISM, MALICIOUS MISCHIEF	4
8	FELONY THREATS	4
8	BURGLARY - 1ST DEGREE	4



# County of Santa Clara

Report Calendar Year: 2023

Report Month: December

## Top 20 ZIP Codes

Rank	ZIP	CITY	Referral Count	Felony Count	Felony Percentage
1	99999	OUT OF COUNTY	26	8	31%
2	95020	GILROY	22	12	55%
3	95116	SAN JOSE	14	3	21%
4	95127	SAN JOSE	12	10	83%
5	95111	SAN JOSE	10	3	30%
5	95122	SAN JOSE	10	6	60%
7	95037	MORGAN HILL	9	2	22%
8	95112	SAN JOSE	8	2	25%
8	95117	SAN JOSE	8	5	63%
8	95118	SAN JOSE	8	2	25%
11	94086	SUNNYVALE	7	2	29%
11	95035	MILPITAS	7	5	71%
13	94087	SUNNYVALE	6	0	0%
13	95124	SAN JOSE	6	4	67%
13	95148	SAN JOSE	6	1	17%
16	95123	SAN JOSE	4	2	50%
16	95125	SAN JOSE	4	1	25%
16	95128	SAN JOSE	4	1	25%
19	94040	MOUNTAIN VIEW	3	1	33%
19	94303	PALO ALTO	3	0	0%
19	95008	CAMPBELL	3	1	33%
19	95032	LOS GATOS	3	1	33%
19	95033	LOS GATOS	3	0	0%
19	95050	SANTA CLARA	3	3	100%
19	95119	SAN JOSE	3	1	33%
19	95120	SAN JOSE	3	1	33%
19	95136	SAN JOSE	3	2	67%

## Top 20 School Districts

Rank	School District	Referral Count	Felony Count	Felony Percentage
1	EAST SIDE UNION	41	24	59%
2	UNKNOWN	33	14	42%
3	SAN JOSE UNIFIED	29	7	24%
4	GILROY UNIFIED	17	9	53%
5	CAMPBELL UNION	15	10	67%
6	FREMONT UNION	11	2	18%
7	OTHER/OUT OF COUNTY	10	4	40%
8	MVW-LOS ALTOS UNION	8	1	13%
9	LOS GATOS-SARATOGA	7	0	0%
9	MORGAN HILL UNIFIED	7	0	0%
11	COE-COMMUNITY	5	2	40%
11	IN CNTY PRVTE(150+)	5	2	40%
11	MILPITAS UNIFIED	5	3	60%
14	CAMPBELL	4	0	0%
15	COE-COURT	3	0	0%
15	CUPERTINO	3	0	0%
15	EVERGREEN	3	1	33%
15	GRADUATED	3	3	100%
15	SANTA CLARA UNIFIED	3	2	67%
20	ALUM ROCK	2	1	50%
20	MOUNT PLEASANT	2	1	50%
20	NOT ATTENDING	2	1	50%
20	OAK GROVE	2	1	50%
20	SUNNYVALE	2	0	0%